

Financial Year End	31/12/2012
Reporting Period Ending	30/09/2012
Reporting Quarter	3Q-2012

Recommendation	HOLD
Target Price (MYR)	0.18
Current Price (MYR)	0.14

Industry Group	Housewares
Industry Sub Group	Housewares

Key Company Statistics	
Bloomberg Ticker	NHR MK
Bursa Stock Code	7215
Issued Capital (mn shares)	236.6
Market Capitalisation (MYR mn)	31.9
52 week High (MYR)	0.20
52 week Low (MYR)	0.11
Average Volume (3 month) '000	34.8
1 Yr Return (%)	27.6

Major Shareholders (%)	
Hsiao Family	59.1
Ng Shw u Ching	0.3
Yiew Kiang Chong	0.0

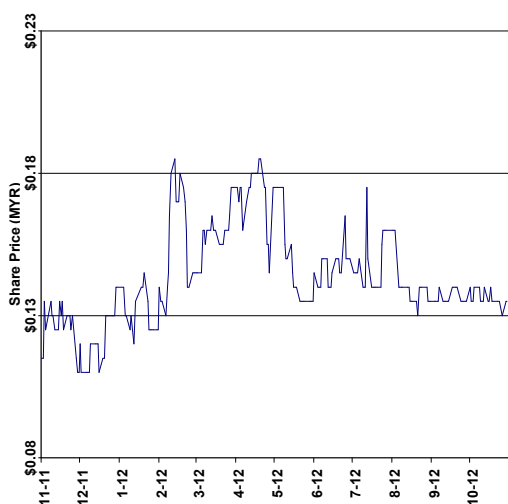
FTSE-BURSA INDEX MEMBERSHIP

FBMKLCI	FBM70	FBMEMAS	FBMHJRAH
No	No	No	No

REPORT INDEX

Contents	Page
Recommendation, Company Profile, Metrics	1
Quarterly Results, Competitor's Metrics	2
P&L, Balance Sheet, Per Share Data	3
7 Year Sales, Net Profit, Price, P-BV charts	4
Recent Co. News, Recommendation Record	5
Analyst's Disclosure, Contact Details	6

SHARE PRICE LAST 12 MONTHS (MYR)



MALAYSIA EQUITY NI HSIN RESOURCES BHD

RESULTS REPORT

YTD 3Q FY12 revenue rose 30.3% vs YTD 3Q FY11. Sales in Japan fell slightly but sales in Malaysia and Taiwan are growing very strongly and now account for more than 48% of total cookware sales. Malaysia is now NHR's most important market offsetting slow growth in Japan. Meanwhile NHR is making good progress in Taiwan and China/HK. Convex mirror sales and margins also improved YTD. However, we expect broadly slower growth in all the major economies, and thus have turned more cautious on our outlook. NHR continues to make good progress in revenue growth, now the challenge is to lift its very small margins; 3Q FY 12 operating margins came in below 3% and need to head higher.

INVESTMENT RISKS

Risks to our recommendation and target price include: i) increases in the MYR exchange rate, ii) rising promotional costs, iii) a sharp slowdown in the general level of economic activity in the economies of the company's trading partners, e.g. Japan, Taiwan, Singapore and South Korea, and iv) continued rises in stainless steel prices would be an additional concern.

RECOMMENDATION

Ni Hsin Resources Bhd continues to make good progress in its marketing efforts, relying more on its own efforts rather than other channels. In addition, management has put in place a number of initiatives that are likely to result in improved sales and higher factory utilisation. However, the global outlook appears to be weakening. We rate the shares a HOLD with a fair value of MYR 0.18.

The company's up to date manufacturing assets alone are worth some MYR 0.15 per share. Thus there is not a great deal of downside for the shares at current levels. The balance sheet is very clean, and management should be able to maintain dividends at the current level. Moreover, should stainless steel prices come off, or capacity utilisation increase further in the quarters ahead, net margins could trend toward levels of 5-6%.

COMPANY PROFILE

Ni Hsin Resources Bhd ("NHR") is one of the leading cookware manufacturers listed in Malaysia. The company has its roots in Taiwan, and was incorporated in Malaysia in 1989 and listed in 2005. About 26% of total revenue is realised in Malaysia, with Japan and Taiwan accounting for the lion's share of the company's substantial export revenue. Group YTD 3Q FY12 revenue comprised 66% cookware products, 18% convex mirrors, 13% clad metals and 3% other.

ANNUAL RESULTS AND METRICS (MYR mn)

FY Dec	2010	2011	2012F	2013F
Revenue	36.0	39.3	49.7	60.0
Revenue g (%)	-24.0	9.3	26.2	20.8
Net Profit	-0.3	0.1	0.5	1.7
Net Profit g (%)	na	na	>100	>100
Dividends Paid	1.2	2.3	1.0	1.5
Owners' Equity	57.4	59.5	59.0	59.2
Total Liabilities	8.1	11.8	12.5	12.6
Debt/Equity (%)	14.1	19.9	21.2	21.4
EPS (sen)	-0.1	0.1	0.2	0.7
P-S (x)	1.2	0.7	0.6	0.5
P-E (x)	na	>100	69.6	19.0
P-BV (x)	0.8	0.5	0.5	0.5
ROE %	-0.6	0.2	0.8	2.8

QUARTERLY RESULTS TABLE (All figures in MYR mn unless otherwise indicated)[illegible]**COMPETITOR'S METRICS (All figures in MYR mn unless otherwise indicated)**

*Consensus data used for peers where available

MALAYSIA EQUITY
NI HSIN RESOURCES BHD**PROFIT & LOSS (All figures in MYR mn unless otherwise indicated)**

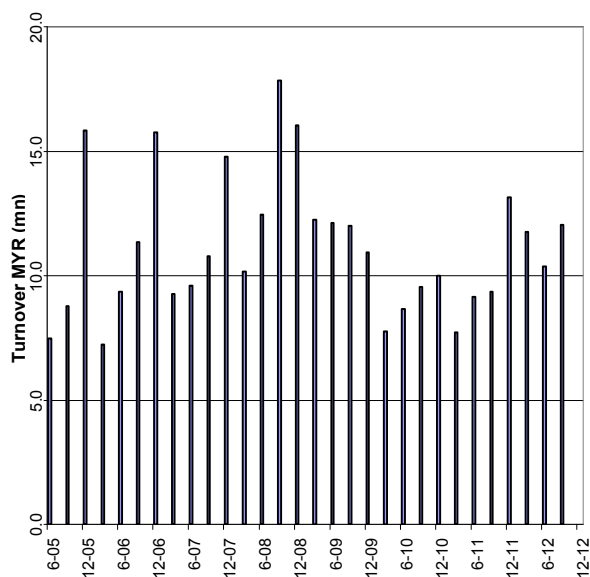
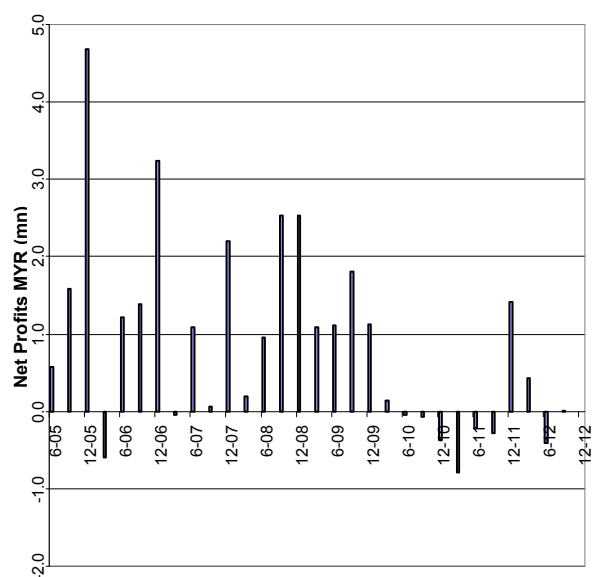
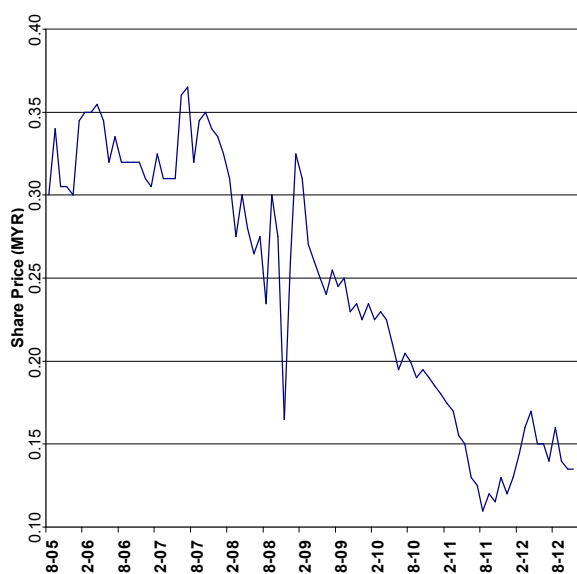
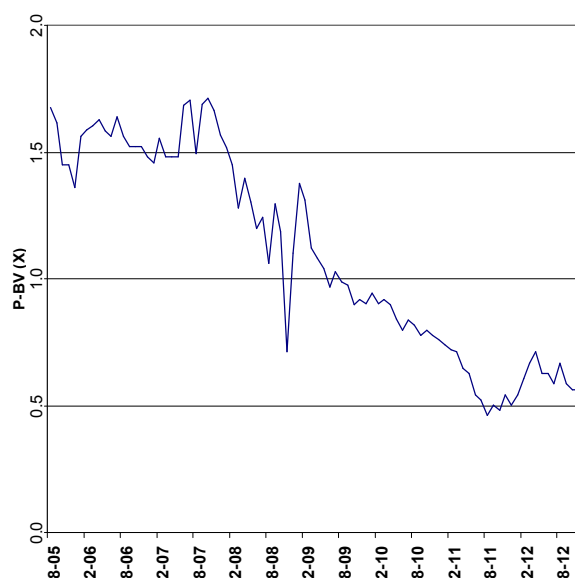
FY Dec	2010	2011	2012F	2013F
Revenue	36.0	39.3	49.7	60.0
Operating Profit	0.0	0.8	1.5	2.4
Other Income	0.1	0.0	0.0	0.0
Share of Associates	0.0	0.0	0.0	0.0
Depreciation/Amortization	-3.0	-3.1	-2.9	-3.2
Finance Costs	-0.1	-0.1	-0.2	-0.2
Pre Tax Profit	0.0	0.7	1.3	2.2
Tax	-0.3	-0.9	-0.9	-0.6
Minority Interest	0.0	0.0	0.0	0.0
Net Profit to Shareholders	-0.3	0.1	0.5	1.7
Operating Margin (%)	0.1	2.0	3.1	4.1
PBT Margin (%)	0.0	1.9	2.7	3.7
Net Margin (%)	-0.9	0.3	0.9	2.8
Effective Tax Rate (%)	na	na	65.5	25.0

BALANCE SHEET (All figures in MYR mn unless otherwise indicated)

FY Dec	2010	2011	2012F	2013F
Total Assets	65.5	71.3	71.5	71.8
Fixed Assets	34.3	36.6	35.7	37.1
Current Assets	26.1	29.6	30.7	29.6
Other LT Assets	5.1	5.1	5.1	5.1
Current Liabilities	5.9	9.6	10.1	10.2
LT Liabilities	2.2	2.3	2.4	2.4
Total Liabilities	8.1	11.8	12.5	12.6
Share Capital	47.3	47.3	47.3	47.3
Minority Interest	0.0	0.0	0.0	0.0
Owners' Equity	57.4	59.5	59.0	59.2
Total Equity	57.4	59.5	59.0	59.2
Total Liabilities & Equity	65.5	71.3	71.5	71.8

PER SHARE DATA (All figures in sen unless otherwise indicated)

FY Dec	2010	2011	2012F	2013F
Revenue	15.2	16.6	21.0	25.4
Cash Flow	1.1	1.4	1.4	2.1
Earnings	-0.1	0.1	0.2	0.7
Dividends	0.5	1.0	0.4	0.6
Book Value	24.3	25.1	24.9	25.0
Payout (%)	na	na	217.9	89.4
P-S (x)	1.2	0.7	0.6	0.5
P-CF (x)	16.8	8.9	9.4	6.5
P-E (x)	na	>100	69.6	19.0
P-BV (x)	0.8	0.5	0.5	0.5
Dividend Yield (%)	2.6	8.1	3.1	4.7
ROE (%)	-0.6	0.2	0.8	2.8
Total Debt/Equity (%)	14.1	19.9	21.2	21.4

MALAYSIA EQUITY
NI HSIN RESOURCES BHD
REVENUE - QUARTERLY LAST 7 YEARS (MYR mn)

NET PROFIT - Q'TERLY LAST 7 YRS (MYR mn)

SHARE PRICE - MONTHLY - LAST 7 YEARS (MYR)

P-BV (X) - MONTHLY - LAST 7 YEARS


MALAYSIA EQUITY
NI HSIN RESOURCES BHD
RECENT COMPANY NEWS

Cookware orders by Ni Hsin's distributors in Malaysia, Greater China and Taiwan improved due to the introduction of a new product- "SmartPan" which is a double sided stainless steel pan during the third quarter, and more promotional efforts to market the "Buffalo" brand of cookware. The 'SmartPan' was launched in Malaysia, Singapore and Australia during the third quarter.

Convex mirror sales and margins are also improving as penetration into the European market increases.

ANALYST'S RECOMMENDATION RECORD

Ticker	Date	Recommendation	FairValue	Price At Recommendation Date	% Price Change Since Prior Recommendation
NHR MK Equity	24-Feb-11	HOLD	0.17	0.17	
NHR MK Equity	11-Apr-11	BUY	0.27	0.15	-11.8%
NHR MK Equity	19-May-11	BUY	0.23	0.15	0.0%
NHR MK Equity	16-Aug-11	BUY	0.23	0.12	-23.3%
NHR MK Equity	21-Nov-11	BUY	0.23	0.12	0.0%
NHR MK Equity	27-Feb-12	BUY	0.23	0.13	13.0%
NHR MK Equity	23-May-12	HOLD	0.20	0.18	34.6%
NHR MK Equity	24-Aug-12	HOLD	0.18	0.16	-8.6%
NHR MK Equity	20-Nov-12	HOLD	0.18	0.14	-15.6%
Return Since Inception of Coverage					-11.6%

**MALAYSIA EQUITY
NI HSIN RESOURCES BHD****ANALYST'S DISCLOSURE**

BUY: Share price may exceed 10% over the next 12 months

TRADING BUY: Share price may exceed 15% over the next 3 months, however longer-term outlook remains uncertain

HOLD: Share price may fall within the range of +/- 10% over the next 12 months

TAKE PROFIT: Target price has been attained. Look to accumulate at lower levels

SELL: Share price may fall by more than 10% over the next 12 months

NOT RATED (NR): Stock is not within regular research coverage

All research is based on materials compiled from data considered to be reliable at the time of writing. However, information and opinions expressed are subject to change at short notice, and no part of this report is to be construed as an offer or solicitation of an offer to transact any securities or financial instruments whether referred to herein or otherwise.

We do not accept any liability directly or indirectly that may arise from investment decision-making based on this report. The company, its directors, officers, employees and/or connected persons may periodically hold an interest and/or underwriting commitments in the securities mentioned.

This report has been prepared Wilson & York Global Advisers Sdn Bhd for purposes of CMDA-Bursa Research Scheme ("CBRS") administered by Bursa Malaysia Berhad and has been compensated to undertake the scheme. Wilson & York Global Advisers Sdn Bhd has produced this report independent of any influence from CBRS or the subject company.

For more information about CBRS and other research reports, please visit Bursa Malaysia's website at: http://www.bursamalaysia.com/website/bm/listed_companies/cmda_bursa_research_scheme/

All Rights Reserved. No part of this publication may be used or re-produced without expressed permission from Wilson & York Global Advisers Sdn Bhd.

J Charles Wilson
Head of Research

QUESTIONS?**CONTACT THE INVESTMENT ADVISER:**

Wilson & York Global Advisers Sdn Bhd

Suite B-11-3A, Level 11, Block B, Plaza Mont' Kiara
2, Jalan Kiara, Mont' Kiara
50480 Kuala Lumpur
Malaysia

Tel: +603 6203 2280
Fax: +603 6203 2281

E-mail info@wygainvestments.com
Website: www.wygainvestments.com

CONTACT THE COMPANY:

Ni Hsin Resources Berhad

No. 45, Jalan Taming Dua
Taman Taming Jaya
43300 Seri Kembangan
Selangor, Malaysia.

Tel: +603 8961 6815
Fax: +603 8961 3941

Website: www.ni-hsin.com.my