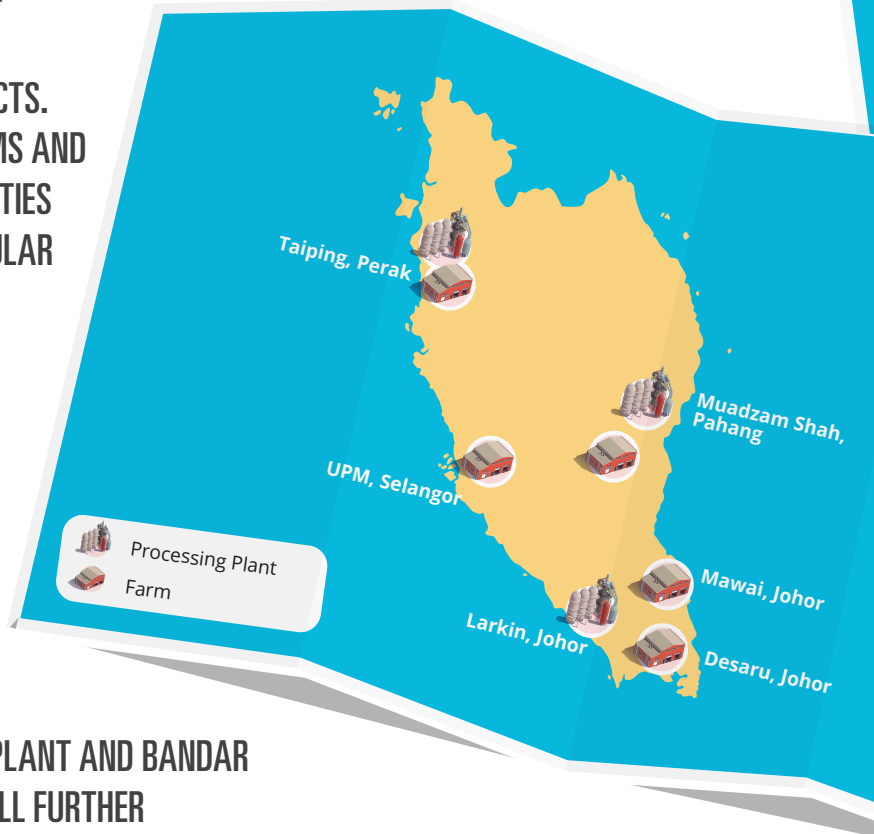


OUR FARMS & PROCESSING FACILITIES

OUR SEVEN FARMS AND FOUR PROCESSING FACILITIES ACROSS MALAYSIA AND AUSTRALIA ARE WELL-POSITIONED TO MEET THE GROWING CONSUMER DEMAND FOR DAIRY AND PLANT-BASED PRODUCTS. STRATEGICALLY LOCATED NEAR BOTH OUR FARMS AND KEY CONSUMER BASES, OUR PROCESSING FACILITIES ENSURE SWIFT DELIVERY THROUGHOUT PENINSULAR MALAYSIA, PRESERVING PRODUCT FRESHNESS.

WE REMAIN FOCUSED ON EXPANDING OUR PRODUCTION CAPACITY TO MEET THE RISING DEMAND FOR BOTH EXISTING AND NEW PRODUCTS. NOTABLY, OUR TAIPING PROCESSING PLANT WAS COMMISSIONED IN JUNE 2023, WHILE TAIPING FARM COMMISSIONED IN 2021. MEANWHILE, THE COMPLETION OF OUR PHILIPPINES PROCESSING PLANT AND BANDAR ENSTEK MANUFACTURING PLANT THIS YEAR WILL FURTHER BOOST OUR PRODUCTION VOLUME AND CAPABILITIES SIGNIFICANTLY.



MUADZAM SHAH

Production commencement: December 2014
Area: 1,105 acres
Capacity: 3,100 dairy cows

- Vertically integrated farm with on-site processing and manufacturing facilities.
- Currently developing an additional 500 acres of land under a 30-year lease from the Pahang State Government, which will expand our total capacity to 6,000 dairy cows.
- In FY2024, we increased our annual processing facility capacity to 103.7 million £



DESARU

Production commencement: September 2017
Area: 325 acres
Capacity: 600 dairy cows

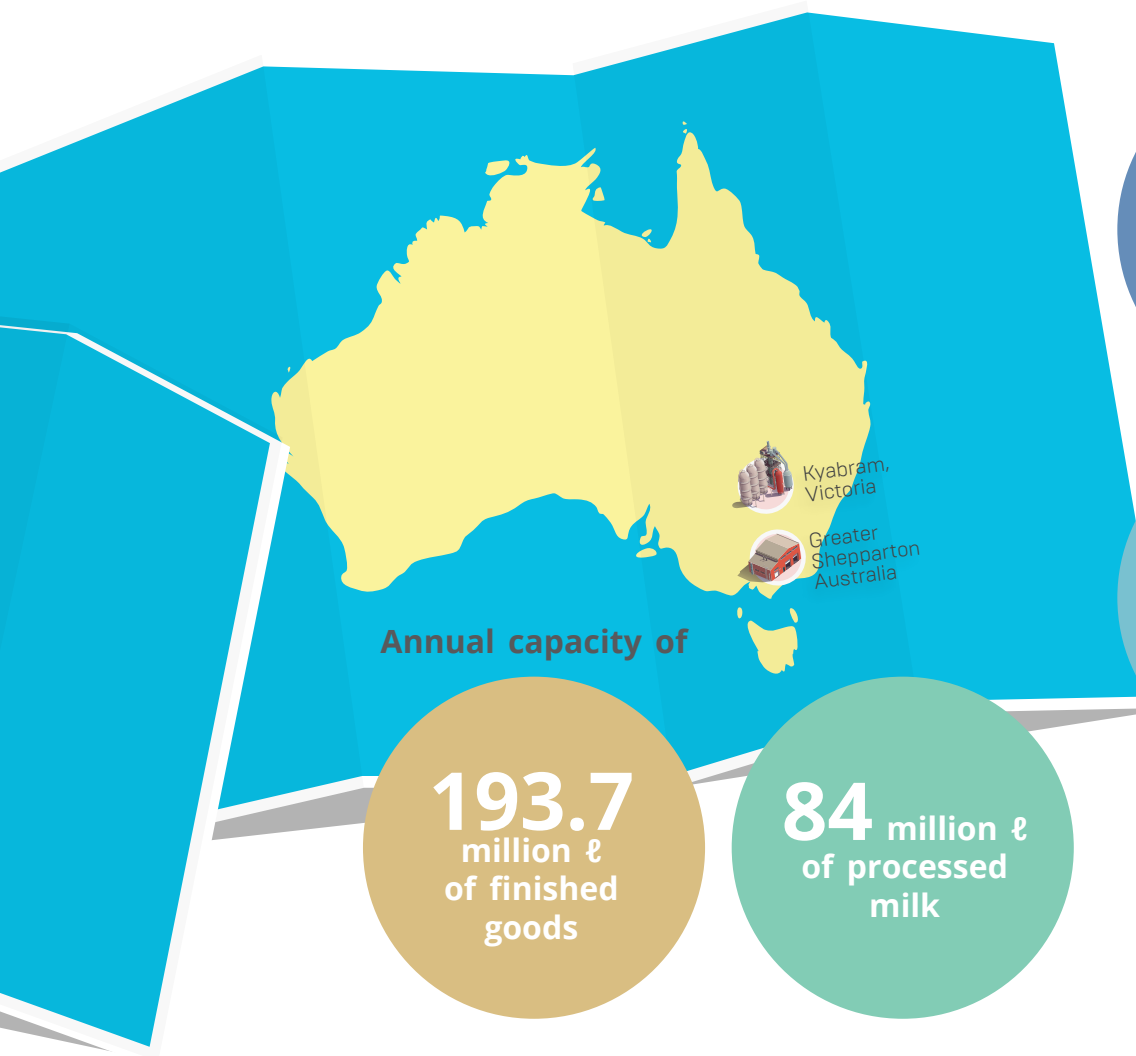
- Full-scale dairy farm with facilities covering all facets of dairy operations, including barns, milking stations, pasture areas, calf facilities and a feed mixing area.
- Milk produced is processed at our Larkin facility, with an annual production capacity of 62.7 million £.



UNIVERSITI PUTRA MALAYSIA (UPM)

Production commencement: September 2018
Area: 100 acres
Capacity: 450 dairy cows

- Full-scale dairy farm and location for the Industry Centre of Excellence for Dairy Farming (ICoE), formed in collaboration with UPM to advance research in dairy products and farming.
- Public visitor centre to educate on dairy farming, the benefits of fresh milk and our brands.



5,367
acres of land

13,810
dairy cows and
bulls*

Annual capacity of

193.7
million £
of finished
goods

84 million £
of processed
milk

* Includes non-milking cows



MAWAI

Production commencement: October 2019
Area: 471 acres
Capacity: 1,800 dairy cows

- Full-scale dairy farm with facilities covering all facets of dairy operations, including barns, milking stations, pasture areas, calf facilities and a feed mixing area.
- Milk produced is processed at our Larkin facility.



TAIPING

Production commencement: September 2021
Area: 828 acres
Capacity: 3,300 dairy cows

- Full-scale dairy farm recently integrated with an on-site milk processing facility.
- Upon completion, it will have a capacity of 3,000 dairy cows.



GREATER SHEPPARTON, AUSTRALIA

Production commencement: December 2017, February 2019 & April 2019**
Area: 2,538 acres
Capacity: 3,250 dairy cows

- ** Based on progressive landbank expansion
- Full-scale dairy farm with facilities covering all facets of dairy operations, including barns, milking stations, pasture areas, calf facilities and a feed mixing area.
 - Milk produced is processed at our Kyabram facility.

OUR GROWTH STRATEGIES



Developing and Grow our Product Portfolio

Building upon our esteemed market reputation, robust research and product development capabilities, and extensive distribution network, we are strategically poised to innovate and diversify our product portfolio.

Some of our key focus areas are to:

- Utilise the expertise and experience of the recently acquired Inside Scoop to launch CPG ice cream by August 2024.
- Expand into the plant-based yoghurt segment while also exploring opportunities in non-dairy packaged food and beverage products.
- Introduce local butter production to diversify our offerings and complement St David Dairy's production of cultured butter.

SUPPORTED BY OUR ROBUST FINANCIAL STANDING AND ESTABLISHED PRESENCE ACROSS THE DAIRY VALUE CHAIN, WE REMAIN COMMITTED TO SEIZING STRATEGIC OPPORTUNITIES THAT AUGMENT OUR CAPABILITIES AND BROADEN OUR PRODUCT PORTFOLIO. THESE ENDEAVOURS FURTHER SOLIDIFY OUR POSITION AS A PROMINENT PLAYER IN MALAYSIA'S DAIRY INDUSTRY WHILE ALSO EXTENDING OUR MARKET FOOTPRINT INTERNATIONALLY.

OUTLINED BELOW ARE OUR THREE GROWTH STRATEGIES WHICH SERVE AS GUIDING PRINCIPLES FOR OUR ASPIRATIONS.



Expanding our Capacity and Capabilities across the Malaysian Value Chain

Given the shortfall in milk production within the Malaysian dairy industry to meet local needs, we are primed to seize the growing demand by expanding our farms and herd, boosting milk production and processing capacity, and improving our distribution capabilities.

- Enhance our capacity for finished products by expanding existing facilities and establishing a new central manufacturing hub at Bandar Enstek to be completed in the second half of 2025.
- Utilise our gene bank ownership, in vitro fertilisation (IVF) proficiencies, efficient farm management and established animal husbandry practices to increase farmland, herd size and milk production capacity.
- Strategically grow our home dealer network to reach underserved areas in Malaysia, while also widening distribution channels, especially in convenience stores and petrol kiosks, to improve the accessibility of our products, including new releases.



Pursuing Regional Expansion Outside Malaysia

With an established presence in Australia since 2017, we stand poised to leverage the nation's status as the world's fourth-largest dairy exporter. Additionally, the substantial production capacity for finished goods at our Kyabram facility offers a prime opportunity to strengthen our growth and expansion endeavours across the Asia Pacific markets.

- Harness the brand recognition and distribution network of St David Dairy to strengthen the distribution of dairy and plant-based products throughout Australia, while increasing production of their acclaimed cultured butter for export to Malaysia and other global markets.
- Seize upon Australia's surplus milk production to boost exports from Australia to Asia, capitalising on the favourable perception of Australian dairy products.
- Establish a foothold in Greater Manila in the Philippines following the commencement of operations at our new processing facility in the third quarter of 2024.
- Utilise the expertise of our local distribution partner and draw from our experience in Malaysia to establish a robust Philippines distribution network.

OUR COMPETITIVE ADVANTAGE

WITH A STRONG PRESENCE THROUGHOUT THE DAIRY VALUE CHAIN, WE HAVE SECURED SIGNIFICANT ADVANTAGES THAT SUPPORT THE COMPETITIVENESS OF OUR PRODUCTS AND BRANDS. BY CAPITALISING ON THESE STRENGTHS, WE ENSURE FARM FRESH IS WELL-PLACED TO CREATE SUSTAINABLE, LONG-TERM VALUE FOR OUR BUSINESS AND ALL STAKEHOLDERS.

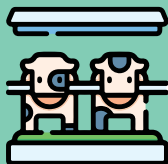
DIVERSIFIED AND APPEALING BRAND PORTFOLIO:

Our extensive range of proprietary brands, built on our core principles of quality and freshness, represents the largest locally manufactured dairy product portfolio among integrated dairy companies in Malaysia, making us a trusted and preferred choice among consumers.



GENE BANK OWNERSHIP AND PROVEN FARM MANAGEMENT PRACTICES:

By owning the largest remaining gene banks of the original Australian Friesian-Sahiwal cattle and adhering to proven animal husbandry practices, we ensure superior herd health and milk yield, resulting in high-quality dairy production.



LEADERSHIP IN THE MALAYSIAN DAIRY INDUSTRY:

Our position as the largest integrated producer of dairy products in Malaysia underscores our industry dominance and capability, empowering us to promptly respond to market trends and evolving consumer preferences.



VERTICALLY INTEGRATED "GRASS-TO-GLASS" MODEL:

With our substantial presence across the entire dairy value chain, spanning from farming to distribution, we harness greater economies of scale and uphold rigorous control over product quality, thereby boosting our efficiency and lowering costs.



EXTENSIVE MARKET REACH THROUGH MULTI-CHANNEL DISTRIBUTION:

Our comprehensive distribution network covers all states and major cities in Malaysia while our unique home dealer network further extends our reach into rural areas, maximising market penetration and customer convenience.



SEASONED MANAGEMENT TEAM COMMITTED TO ESG INITIATIVES:

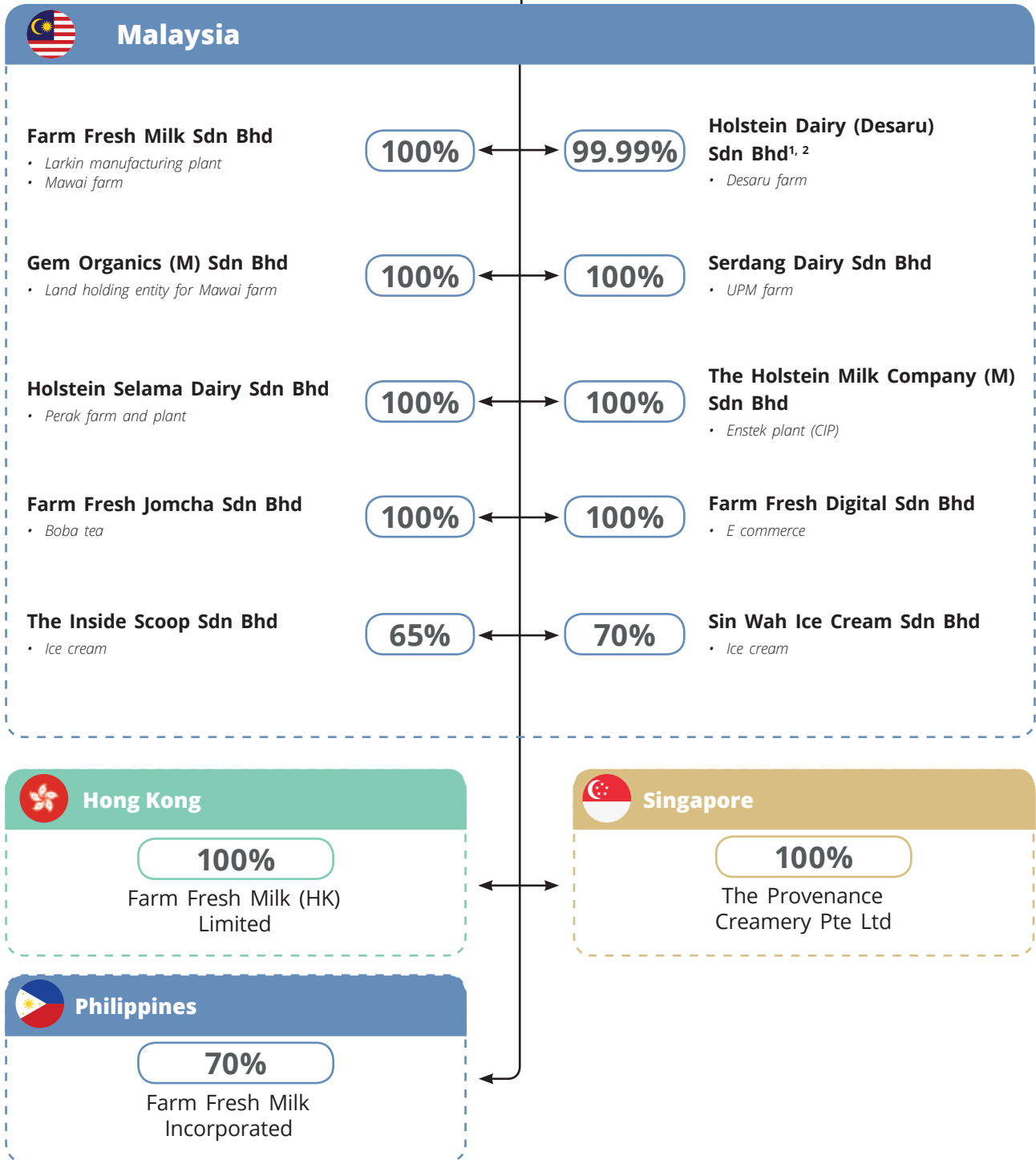
Led by our founder and backed by 34 years of dairy industry expertise, our management team is committed to sustainable growth, propelling us to the forefront of the industry in terms of environmental responsibility.

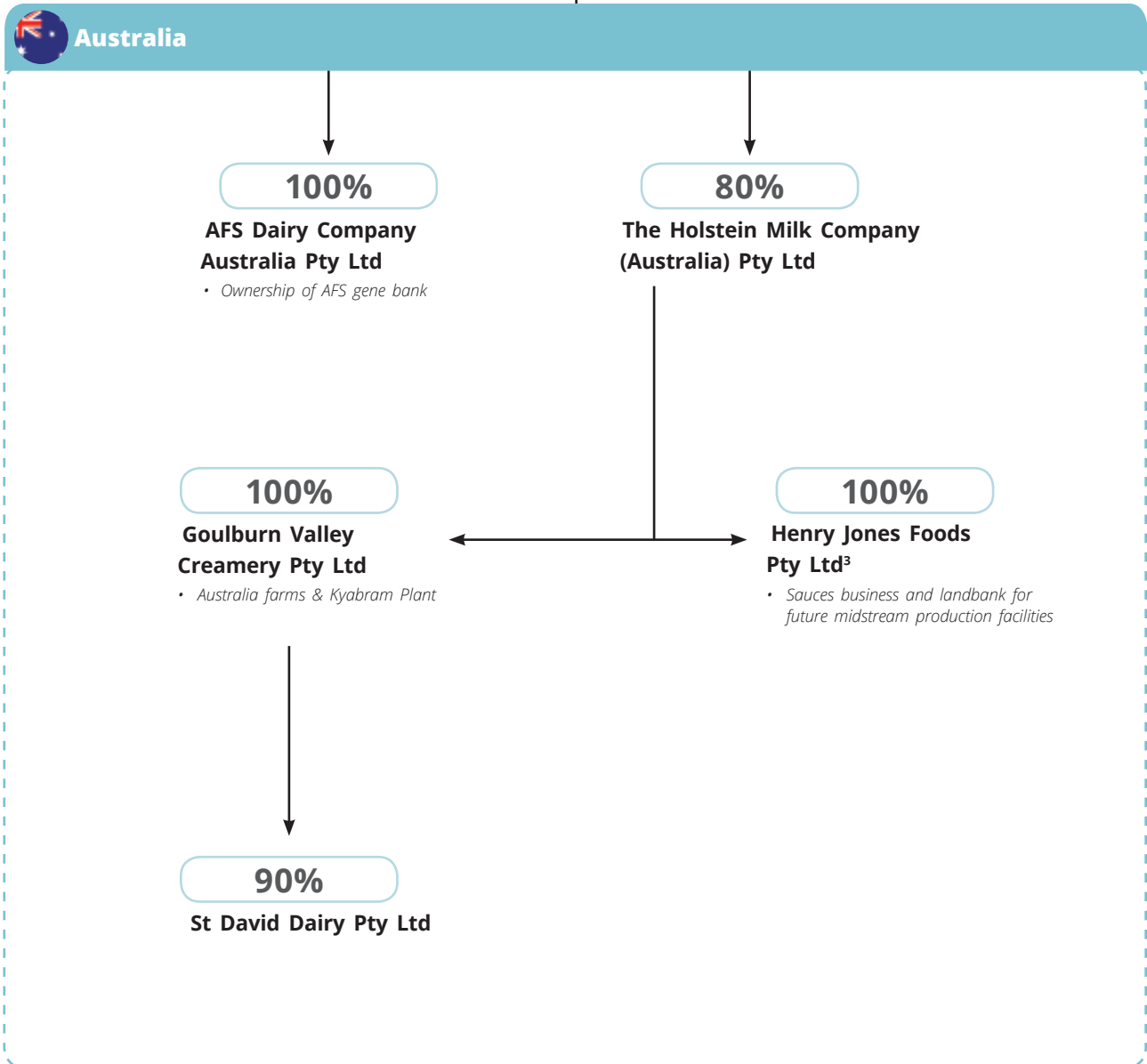


CORPORATE STRUCTURE



• Muadzam Shah farm and plant





Notes:

- 1) Loi Tuan Ee and Azmi Bin Zainal hold one share each in Holstein Dairy (Desaru).
- 2) Pursuant to the terms of the joint venture agreement dated 23 February 2015 between Bio Desaru Sdn Bhd and our Company (as supplemented by the supplementary agreement dated 17 May 2018) ("JVA"), Bio Desaru Sdn Bhd will subscribe for 33% ordinary shares in Holstein Dairy (Desaru) to be satisfied by part of the rental under the registered lease for the Desaru Farm.
- 3) Previously known as Kyabram Jam Company Pty Ltd.

KEY MILESTONES

2009

- Commenced dairy farming operations with the rearing of goats and selling of goat milk.

2011

- Khazanah Nasional Berhad invests in The Holstein Milk Company Sdn. Bhd. (now known as Farm Fresh Berhad) via its wholly-owned vehicle, Agrifood Resources, acquiring a 30% stake.

2012

- Started processing operations at our Larkin facility.
- Launched our first flavoured milk product: Farm Fresh chocolate milk.
- Introduced Farm Fresh colouring-free yoghurt.

2014

- Initiated dairy farming activities at our Muadzam Shah farm.
- Appointed as the “anchor company” for the Muadzam Shah Cattle Research and Innovation Centre in Pahang.



2022

- Awarded the Platinum Award in the Dairy Beverage category and named Putra Most Enterprising Brand of the Year at the Putra Brand Awards 2022.
- Farm Fresh Berhad is listed on the Main Board of Bursa Malaysia on 22 March 2022.
- Completed a 90% acquisition of Melbourne-based premium dairy company St David Dairy Pty. Ltd.
- Introduced our retail beverage brand, Jom Cha by Farm Fresh, to the Malaysian market.
- Acquired Greater Shepparton Farm 4, a 120-hectare farm near our Kyabram facility in Australia.
- Honoured with the Brand of the Year award in the Dairy Products category at the 2022-2023 World Branding Awards.
- Recognised for our sustainable dairy farming practices in the 2022 Steward Leadership 25 list of inspiring Asia Pacific companies.

2021

- Began operations at our Taiping farm.
- Introduced A2 organic milk and banana milk.
- Established our UPM Facility, which commenced operations in March 2022.
- Received Certified Humane® farming accreditation from Humane Farm Animal Care (HFAC).
- Achieved Good Agricultural Practices Certification accreditation from the Malaysian Department of Veterinary Services (DVS) for our UPM farm.
- Recognised as one of Asia's Best Performing Companies at the Asia Corporate Excellence & Sustainability Awards 2021 (ACES) in November 2021.



2023

- Achieved our second consecutive Platinum Award in the Beverage-Dairy category at the Putra Brand Awards.
- Recognised for the success of our initial public offering (IPO) exercise, we earned distinctions for Best IPO for Retail Investors in Southeast Asia (Alpha Southeast Asia 16th Annual awards) and Best Deal of the Year for Minority Shareholders in Southeast Asia 2022 (Alpha Southeast Asia 16th Annual awards).
- We also received the IFN Equity & IPO Deal of the Year 2022 in the IFN Deals of the Year 2022 awards.
- Completed a 65% acquisition of The Inside Scoop Sdn. Bhd. in May 2023.
- Completed a 70% acquisition of Sin Wah Ice Cream Sdn. Bhd. in October 2023.

2015

- Entered into an agreement for the acquisition of AFS Dairy Company, gaining ownership of one of the largest remaining gene banks of the AFS dairy breed. The acquisition was completed in 2017.
- Received the “Best Dairy Farm” award from Asia Livestock.

2016

- Commenced distribution of our products in Singapore.
- Became the first Malaysian company to launch kurma (palm dates) RTD milk using pure kurma extract.

2017

- Fully operationalised our Desaru farm, increasing our fresh milk supply capacity.
- Acquired Petabern Dairies, providing access to an Australian Holstein purebred herd and resulting in the establishment of our first dairy farm in Australia, Greater Shepparton Farm 1.
- Achieved the Good Agricultural Practices Certification accreditation from the Department of Veterinary Services (DVS) for our Muadzam Shah farm.

2020

- Received the ASEAN Inclusive Business Award.
- Launched oat milk, almond milk and chocolate soy milk products.



2019

- Entered into an agreement, through THMC (Australia), to acquire Greater Shepparton Farm 3, another dairy farm near Greater Shepparton Farm 1 and Farm 2, facilitating additional land banking for herd expansion and AFS breeding.
- Completed the acquisition of our Kyabram facility via THMC (Australia), boosting our capacity to process fresh milk in Australia and reducing dependence on third-party processors.

2018

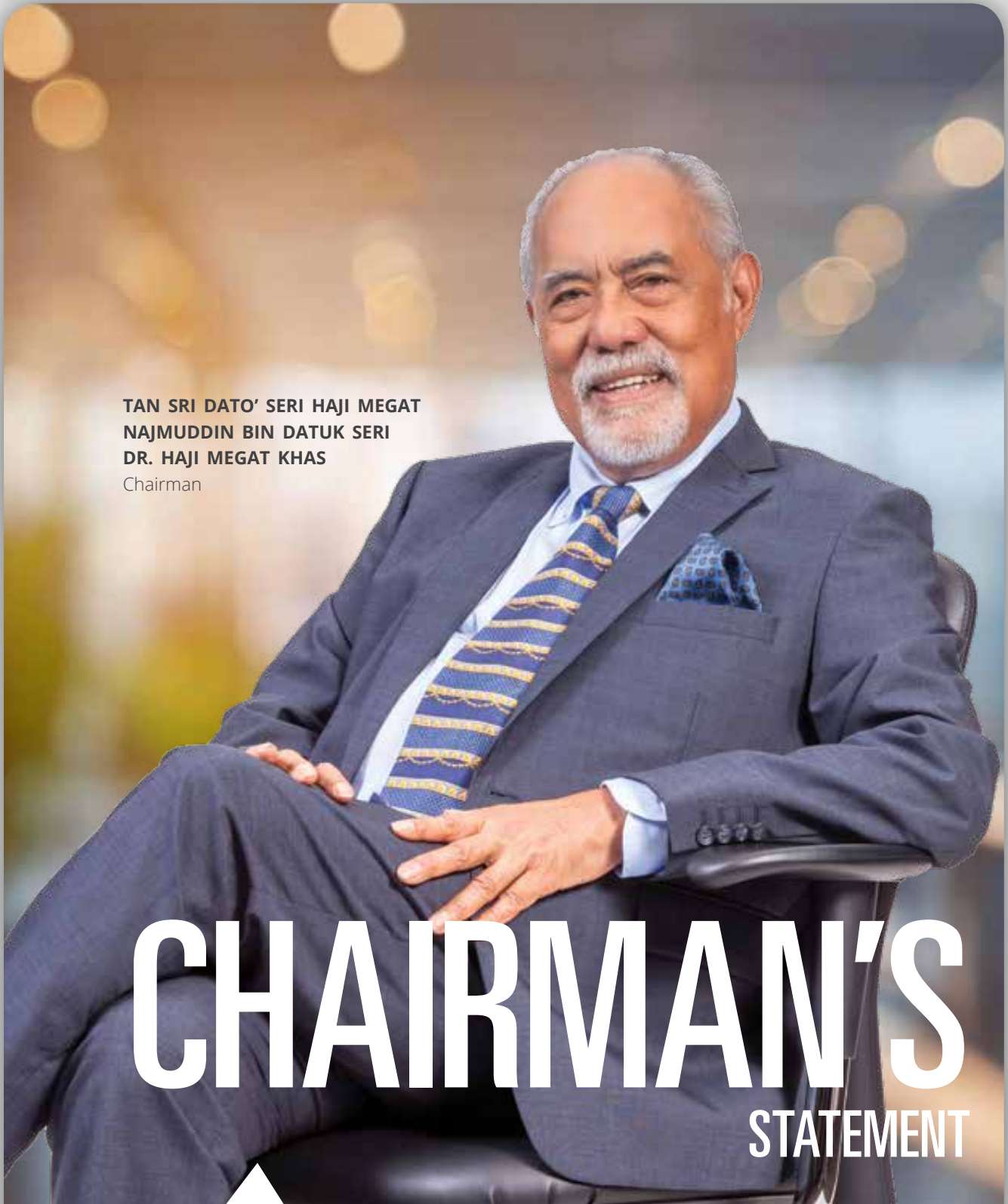
- Launched lactose-free milk, pioneering the offering of a lactose-free dairy option in Malaysia.
- Entered into an agreement, through THMC (Australia), to acquire Greater Shepparton Farm 2, another dairy farm near Greater Shepparton Farm 1, enabling further herd expansion.
- Commenced processing and manufacturing activities at our Muadzam Shah farm.
- Introduced fresh milk-based UHT milk.



2024

- Achieved our third consecutive Platinum Award in the Beverage-Dairy category at the Putra Brand Awards.





**TAN SRI DATO' SERI HAJI MEGAT
NAJMUDDIN BIN DATUK SERI
DR. HAJI MEGAT KHAS**
Chairman

CHAIRMAN'S STATEMENT

DEAR STAKEHOLDERS,

ON BEHALF OF THE BOARD OF DIRECTORS ("THE BOARD"), I AM THRILLED TO PRESENT FARM FRESH BERHAD'S ("FARM FRESH" OR "THE GROUP") INTEGRATED ANNUAL REPORT FOR THE FINANCIAL YEAR ENDED 31 MARCH 2024, HIGHLIGHTING THE SIGNIFICANT PROGRESS WE HAVE MADE IN OUR SECOND FULL FINANCIAL YEAR SINCE OUR LISTING ON THE MAIN BOARD OF BURSA MALAYSIA.

I AM PLEASED TO REPORT THAT THE FARM FRESH GROUP HAS ACHIEVED STRONG RESULTS IN FY2024, SETTING NEW HIGHS IN REVENUE AND PROFITABILITY SINCE OUR LISTING IN MARCH 2022. WHILE WE HAVE BENEFITED FROM A FAVOURABLE EXTERNAL ENVIRONMENT IN THE SECOND HALF OF FY2024, IT IS THE EXECUTION OF OUR STRATEGIES OVER THE PAST FEW YEARS THAT HAVE BEEN CRUCIAL IN DRIVING THE GROUP'S ROBUST FINANCIAL AND OPERATIONAL PERFORMANCE.

AS WE CONTINUE TO ADVANCE TOWARDS OUR LONG-TERM GOALS OF EXPANDING ACROSS THE DAIRY VALUE CHAIN AND ENTERING NEW ASIA-PACIFIC MARKETS, WE REMAIN COMMITTED TO BEING A SUSTAINABLE AND RESPONSIBLE DAIRY COMPANY. THE WELL-BEING OF CONSUMERS, THE HEALTH OF THE ENVIRONMENT, THE UPLIFTMENT OF LOCAL COMMUNITIES AND ROBUST GOVERNANCE REMAIN THE CORNERSTONES UPON WHICH WE CONTINUE TO GENERATE VALUE FOR ALL OUR STAKEHOLDERS.

EXPANDING IN TANDEM WITH OUR VALUES

Guided by our mission to be the most ethical and transparent dairy company, we have formulated a truly honest growing-up milk, one that is rich in essential nutrients and vitamins for children's optimal development, and free from unnecessary or hidden ingredients.

The success of our Farm Fresh Grow in UHT format, launched in FY2023, has indeed underscored the demand for honest and healthy dairy products for children. Capitalising on this demand, we further increased the accessibility and reach of Farm Fresh Grow with the launch a milk powder variant in December 2023.

This launch was supported by a robust marketing campaign to ensure customers remain aware of the benefits of our growing up milk, which contains no added sugars, sugar substitutes, vegetable oil or preservatives. We were also honoured

to have iconic Malaysian singer Dato' Sri Siti Nurhaliza as our brand ambassador, endorsing Farm Fresh Grow as the best milk choice for her children.

Now, as we stand on the cusp of further expansion into adjacent dairy categories such as chocolate malt beverage, we remain steadfast in holding true to our values, and will continue to ensure honest labelling on all our products are keeping them free from unnecessary ingredients.

It is heartwarming to note that our honest and ethical approach as a dairy company has once again been recognised and validated by our customers and the industry. We proudly received the Platinum Award in the Beverage - Dairy category of the Putra Brand Awards 2023, making us the nation's favourite dairy beverage brand for the third year running.



The success of our Farm Fresh Grow in UHT format, launched in FY2023, has indeed underscored the demand for honest and healthy dairy products for children.



Received the

Platinum Award in the Beverage - Dairy category of the Putra Brand Awards 2023

Chairman's Statement

ANIMAL WELFARE AND ENVIRONMENTAL STEWARDSHIP

Just as we prioritise the value and benefits of our dairy products, we take a responsible approach to our farming and production processes, ensuring the welfare of our herd and striving for harmony with our natural surroundings. As the operator of the first dairy farm in Asia to be Certified Humane® in the handling and raising of livestock, we proudly maintain this certification across all our farms. We have also established the Group's Good Animal Husbandry Practices (GAHP), which provide detailed guidelines for animal nutrition, healthcare and housing to ensure high standards are upheld across our operational footprint.

Further to this, we continue to leverage our in vitro fertilisation (IVF) capabilities to enhance the genetic makeup of our imported cow breeds for greater adaptability to the tropical Malaysian climate, while collaborating with scientific research organisations and tertiary institutions to innovate new solutions that enhance animal welfare while improving milk quality and yield.

In terms of environmental stewardship, we are excited to have completed construction on our very first biogas plant, which began operations at our Muadzam Shah farm in April 2024. Standing as a beacon of our commitment to circular practices, the new plant allows us to recycle millions of kilograms of animal waste each year and enables the farm to utilise clean and renewable biofuel.

This is anticipated to reduce our diesel usage by 670,000 litres per year and cut annual emissions by the equivalent of 9,800 tonnes of carbon dioxide, significantly improving our carbon footprint.

Additionally, we also completed construction on the rooftop solar photovoltaic (PV) installation at our Taiping farm during FY2024, which has extended our use of solar power to three locations – Muadzam Shah, Larkin and Taiping – boasting peak capacities of 1,025.07 kWp, 689.02 kWp and 525.03 kWp, respectively.

In promoting circularity beyond our organisation, we have continued to increase our use of fully recyclable Tetra Pak packaging, which now accounts for 33.6% of our product sales, while also expanding our Milk on Tap initiative to 11 locations across Peninsular Malaysia. It is noteworthy that since its launch in September 2022, Milk on Tap has prevented the use of 375,500 plastic bottles, eliminating over 18,700 kg of plastic packaging.

These progressive efforts to grow our use of renewable energy, reduce waste and champion recycling amongst consumers underscores our commitment to play a leading role in environmental sustainability as the top agrifood company in Malaysia. Looking ahead, we will continue to identify new opportunities to further reduce our environmental footprint and set an exemplary standard of responsibility across the dairy industry.



THESE PROGRESSIVE EFFORTS TO GROW OUR USE OF RENEWABLE ENERGY, REDUCE WASTE AND CHAMPION RECYCLING AMONGST CONSUMERS UNDERSCORES OUR COMMITMENT TO PLAY A LEADING ROLE IN ENVIRONMENTAL SUSTAINABILITY AS THE TOP AGRIFOOD COMPANY IN MALAYSIA.





“

BEING A HOME-GROWN DAIRY LEADER, IT IS A MATTER OF PRIDE THAT WE SHARE THE BENEFITS WE REAP WITH LOCAL COMMUNITIES, ESPECIALLY THOSE THAT HAVE PLAYED A ROLE IN SUPPORTING THE GROWTH OF OUR BUSINESS.

”

PEOPLE AND COMMUNITIES

Being a home-grown dairy leader, it is a matter of pride that we share the benefits we reap with local communities, especially those that have played a role in supporting the growth of our business, such as our employees, vendors, partner farmers and members of our home dealer network. In line with our local-first hiring policy, 67% of our workers in farms and processing facilities hail from rural areas in Malaysia, including 11 individuals from indigenous Orang Asli communities. We are also committed to prioritising local sourcing, with 68% of the total procurement spend by Farm Fresh Malaysia in FY2024 being spent on local suppliers.

Meanwhile, we enabled our network of 58 stockists, 762 home dealers and 971 agents nationwide, 80% of whom are women and many of which are micro-entrepreneurs, earn a total of RM47.2 million in FY2024, while our partner farmers earned RM2.7 million in income over the past year.

By distributing income fairly into rural areas of Peninsular Malaysia, we contribute to the socioeconomic stability and progress of smaller towns and remote communities where job opportunities are scarce. Equally importantly, by sharing our knowledge, experience and expertise with our partner farmers and home dealer network members, we play a role in uplifting the local agriculture and dairy industry.

We also contribute to broader society through nutritional and educational initiatives. Through our School Milk Programme, we prioritise the healthy development of schoolchildren above profit margins, working with the Ministry of Education to provide fresh milk to school canteens at fair prices across Northern, Eastern and Southern Peninsular Malaysia. Over FY2024, we distributed over 65 million packs of school milk to more than 3,400 schools.

To promote educational opportunities for the younger generation, the Group currently provides support through three avenues – our internship programme, scholarship programme and community centres. Via our internship programme, we have provided internship placements to 192 high-achieving students since 2019, with many of these participants transitioning into full-time positions within our company. Meanwhile, Our Farm Fresh Scholarship Programme, launched in 2021 with the East Coast Economic Region Development Council (ECERDC), has invested RM36,250 to support Orang Asli students in the Rompin district of Pahang, enabling many to pursue university studies and join our workforce upon graduation.

In June 2023, we also began participating in the Multidimensional Human Capital Development Programme (*Program Pembangunan Insan Multidimensi*), in collaboration

Chairman's Statement

with the Malaysian Ministries of Education and Health and Yayasan Didik Negara. Aimed at uplifting the education, nutrition and living standards of hardcore poor students through the setting up of special community centres, we have thus far committed over RM1,000,000 to open ten such centres across Malaysia, with our inaugural community centre at Sentul currently providing students with extra classes, tuition, religious classes, motivational sessions and nutritious meals, including Farm Fresh milk.



We focused in FY2024 on enhancing our reporting framework, adding several new topics related to ethics and governance to this year's sustainability disclosures.



FY2024

distributed over **65 million** packs of school milk to more than **3,400** schools.



Milk on Tap has prevented the use of **375,500** plastic bottles, eliminating over **18,700 kg** of plastic packaging.

Across all of our community driven initiatives, we invested a total of RM768,564 during FY2024, with our efforts impacting a total of 4,500 beneficiaries.

GOVERNANCE AND INTERNAL CAPABILITIES

As we expand across different categories and regions, we recognise the importance of consistently upholding high standards of business governance and conduct across our operations.

Our sustainability, growth and operational objectives remain spearheaded by our esteemed and diverse Board of Directors, who attended meetings during FY2024, ensuring their invaluable experience and expertise are fully utilised in shaping our strategies and safeguarding stakeholders' interests. In FY2025, we aim to ensure more balanced gender diversity on our Board to better understand and address our stakeholders' needs.

Having expanded our suite of governing policies in the past two years, we focused in FY2024 on enhancing our reporting framework, adding several new topics related to ethics and governance to this year's sustainability disclosures. Alongside this initiative to improve transparency and bolster our reporting framework, we have also set new environmental targets to drive collective action across the Group towards our overarching goals.

Building upon the progress we have made thus far as a listed company, we will remain focused on enhancing governance and fostering employee

development, setting a solid foundation upon which to achieve our long-term value creation objectives.

ACKNOWLEDGEMENTS

The past year has seen the Group reach a number of notable milestones, and I am very grateful to our dedicated workforce for their perseverance during tough times and dedication in executing our strategies for growth and success. Guided by the vision, leadership and guidance of our Founder, Group Managing Director and Group Chief Executive Officer, Loi Tuan Ee, our team's relentless pursuit of excellence in all endeavours has been truly inspiring.

I also extend sincere appreciation to our valued partners, including suppliers, distributors and government authorities. Their steadfast support and collaboration enable us to consistently fulfil our promise as a trusted home-grown dairy company, and we remain committed to meeting and exceeding the expectations of all our stakeholders and shareholders.

As we progress on our journey, let us continue working hand-in-hand to fully unlock the future potential of Farm Fresh Berhad. Our unwavering commitment to sustainability, honesty and customer well-being will propel us forward, empowering us to make a lasting positive impact on our communities and the environment for generations to come.

Tan Sri Dato' Seri Haji Megat Najmuddin Bin Datuk Seri Dr. Haji Megat Khas

Chairman